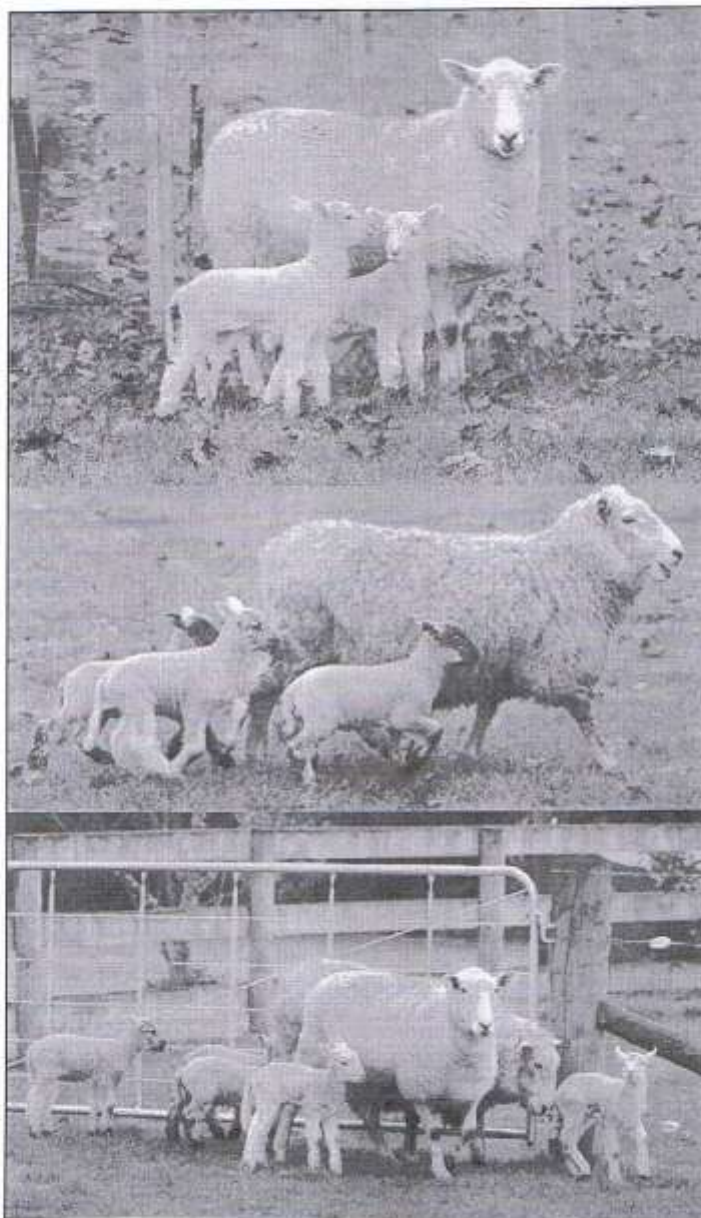


# EUREKA EXPRESS

VOL XXXI No. 6 CIRC 285

July 2010



## AND DON'T FORGET THE LAMBS

(A big thank you to Charlie Johnson of Manor Park for his lovely pics of his prolific flock featured on our cover.)



# Tauwhare School PTA QUIZ NIGHT



Saturday, September 18<sup>th</sup> 7:30 pm

Tauwhare Hall, 1158 Tauwhare Road


**\$20 per person** (includes complimentary drink and supper)


**8 people per team** (if you don't have 8 people, don't panic, you will be mixed with other contestants to form teams of 8)

**Cash only bar**



Fantastic auctions & quick fire raffles so bring your cheque book or plenty of cash

Great spot prizes 

Prizes for winning team, best dressed team and best decorated table 

All proceeds go towards the Tauwhare School Pool project

RSVP names and money by Tuesday 31<sup>st</sup> August to  
Tauwhare School PTA, 36 Scotsman Valley Rd, RD7, Hamilton  
or email [graciaandjackleariffin@ihug.co.nz](mailto:graciaandjackleariffin@ihug.co.nz)

Name(s): \_\_\_\_\_

Team name (if entering a team of 8): \_\_\_\_\_

Contact phone or email: \_\_\_\_\_

## **GUEST EDITORIAL**

### **MY TIME AT TIHOI**

I started at Tihoi beginning of February this year. Tihoi is a Venture School programme run by St Paul's Collegiate for Year 10 boys which we do for six months. We lived in the same house with the same eight boys for that time. We had to do all our own cooking on a coal range, and cleaning. We weren't allowed cell phones, so we could only write letters home, which we had to do every week.

We did school work for four and a half days a week and the rest of the week was fun stuff. Tramping, kayaking, rock climbing, sailing, caving and alpine. Every morning we got up at 6:15am. The cooks on roster got the coal range going to cook our breakfast and the rest of us go to morning surprise. This is usually hard fitness or a very cold swim even if you are a tiny bit late. We also did fitness after school work in the afternoons. At the beginning we started off training for a 2km run, by the end we did a 21km run – I came third in it.

I enjoyed the outdoor weekends the most. Tramping in the Pureora Forest, finding our way by compass and skinning and eating a rabbit. Rock climbing was fun, making your way up a rock face looking for places to put your hands and feet. Abseiling down 120 foot rock, scary till you get over the edge. Caving through narrow gaps and getting wet and dirty as we got 70m underground. Heaps of fun. Sailing in Sunburst class yachts on Lake Rotorua, especially when the wind came up. Lots of us tipped out. We climbed Mount Ruapehu in May, there was only a little bit of snow. We stayed two nights up there. The view from up there was awesome.

At the end of Tihoi we were able to choose our favourite outdoor activity to do a five day expedition. I chose white water kayaking. I loved going down the wild rapids, avoiding rocks and trying not to end up upside down. The water was freezing but had a great time.

I really enjoyed my time at Tihoi. And have memories and experiences I will never forget.

*By Jaden Verryt*



### **RAINFALL**

	June 2010	Year to 30 <sup>th</sup> June
Total (mm)	200.5	663
Average (1994-2010)	118.5	545
Difference	+82	+118

Rainfall recorded on 22 days.

Previous highest June total in the 1994 – 2010 period was 1998 with 183 mm

## SNIPPETS

**NEW BABY CONGRATULATIONS:** TO Greg and Rachael Campbell of Friedlander Road who welcomed another beautiful baby boy, Max Alexander, on July 1<sup>st</sup>. A lovely brother for Summa and Jack and another dear grandson for Willie and Karen Campbell.

**NEW GRANDCHILD CONGRATULATIONS:** to Margaret and Mervyn Knauf of Holland Road, who were delighted to welcome a new grandson, Jamie Sean Nooroa on May 20. A darling son for Trish and Lance Nooroa. Every best wish to all.

**ENGAGEMENT CONGRATULATIONS:** to Angela du Preez and Dave Hall of SH 26 who have announced their engagement. Very best wishes to you both.

## WEDDING CONGRATULATIONS

to Sheree Neale and Blair Martin who wed 20 March 2010 in Hamilton. Sheree is a granddaughter of Lila Duncan and lived in Eureka for some time prior to her wedding.



## EUREKA EXPRESS

ADVERTISING RATES		CONTACTS – Gail or Gayle	
<i><b>Classified Advertisements</b></i>	<i><b>Free</b></i>	<i><b>Gail Mayall (Editor)</b></i>	<i><b>Gayle Orr (Treasurer)</b></i>
<i><b>Small Business Advertisements</b></i>	<i><b>\$10 / month</b></i>	<i><b>70 Eureka Road</b></i>	<i><b>1139 SH26, Eureka</b></i>
<i><b>• x 10 insertions</b></i>	<i><b>\$80 / year</b></i>	<i><b>Ph 8241 758</b></i>	<i><b>R D 6, HAMILTON 3288</b></i>
<i><b>One Third Page Advertisement</b></i>	<i><b>\$15 / month</b></i>	<i><b>Fax 8241 028</b></i>	<i><b>Ph 8241 713</b></i>
<i><b>• x 10 insertions</b></i>	<i><b>\$120 / year</b></i>	<i><b>e-mail:</b></i>	<i><b>Fax –</b></i>
<i><b>One Half Page Advertisement</b></i>	<i><b>\$20 / month</b></i>	<i><b><a href="mailto:gailandbarry@slingshot.co.nz">gailandbarry@slingshot.co.nz</a></b></i>	<i><b>e-mail: <a href="mailto:gorr@xtra.co.nz">gorr@xtra.co.nz</a></b></i>
<i><b>• x 10 insertions</b></i>	<i><b>\$180 / year</b></i>		

### **BROADBAND PETITION:**

Just prior to Xmas 09 I collected signatures for a petition to Telecom seeking to enable Waverley Road for broadband (access stops at the Seddon Rd intersection). I thought it might be good to let everyone know the result of the petition, which was a letter from Telecom informing me that there will NOT be broadband access for at least three years, and that we should use the (far more expensive, and markedly slower) mobile broadband product they offer. Further, they stated that even after three years, broadband is not guaranteed and this is simply the next time that they will assess the situation for us. Overall, a very disappointing response. Thanks to all those who signed the petition (we had over thirty households in the end), and let's keep the pressure on them!

**Jake Ngawake, 99 Waverley Rd.**

### **MARKET PLACE**



#### **WANTED**

Holiday Home to Rent March 4<sup>th</sup> to 12<sup>th</sup> 2011

Four or preferable 5 bedrooms required to sleep two couples, one woman and three men. At least two bathrooms also.

Attending NZ Clay Targets Champs, Holland Road  
Email [s.cbell@xtra.co.nz](mailto:s.cbell@xtra.co.nz) or phone 06 8387733

# **AGM**

# **AGM**

# **AGM**

The Annual General Meeting of the  
**EUREKA HALL COMMITTEE**

Will be held Monday 30 August 2010

At 8.00pm at the Eureka Hall.

**All welcome.**

Secretary



# Tauwhare School

PO Box 104 2702 St. Albans  
e: admin@tauwhare.school.nz  
t: 07 324 1924



Wow what a busy second term we had! It was time for both students and teachers to have a well earned break to recharge those batteries, and the weather in the holidays was just superb!

A quick catch up on some of the events held last term: Staff have all been doing quite a lot of professional development last term. It is essential that staff remain at the cutting edge of education so that classroom programmes and teaching and learning strategies are based on current research and good practice.

There is robust discussion happening on the National Standards and how they will affect students and on reporting to parents and what this might look like. Over the year we will be drafting a revised reporting system which we will trial this year and we will ask for feedback to make sure the reports continue to reflect your child's progress and achievement, and are easily understood.

Our next Parent Interviews will be held on 2<sup>nd</sup> and 3<sup>rd</sup> of August.

Three of us attended Neil Mackay's sessions on Dyslexia. Many of the strategies Neil advocates can be used for all children who have specific learning difficulties in literacy, whether the child is dyslexic or not. It is important to remember that at least 10% of any community will be dyslexic. For most of these children excellent classroom programmes, small group work, extra work with phonics and sounds (e.g. Toe-By-Toe), SPeLD and teachers who are knowledgeable about Dyslexia will help them. However for 4% of these children some learning remains a struggle. Thanks to my time in England in 2008 researching Dyslexia on an international stage, it was very apparent that we are way ahead in many aspects of our work in helping children with learning difficulties and were the envy of many of the teachers at the course. We will continue to work to find new strategies and interventions so no child is left behind.

## Fieldays Catering

The folk at Ravensdown are thrilled with the way their catering was managed over the four days of the Fieldays. They have asked us back for next year! Thank you to everyone involved in this huge fundraiser. My sympathies go to anyone who headed home after a full on day at the BBQ to find sausages on the menu for dinner that night.

## Spelling Bee

The children learnt their spelling words over the weeks prior to the spelling bee held at the end of last term.

They sourced their sponsors and on completion of their test collected the money in. A total of \$1,850.81 has been raised towards Year 5 & 6 Camp. The Senior school prize for the most money collected went to Faye McDougall winning the digital camera and the Junior School prize went to Emily Brunton taking home the brand new bike. Thank you to all those people that sponsored a child.

## Works of Art

These gorgeous pumice sculptures have been carved by the children in Room 1. They are sitting in



my office for safe keeping while the other children finish their sculptures - I will be very loath to part with them.

## Firewise Visit

Thank you to Mr Wayne Harris for spending the morning in each of the classrooms going over fire safety and what to do in the event of a fire with the children. It really is a timely reminder at this time of year as we tend to hear of more house fires in winter, and ensuring that your children know your home evacuation plan as well.

## 7 A-side Tournament

The Yr 4-6 children went to the 7 Aside on Friday and came back buzzing and covered in mud! They had obviously had a great time playing against the three other schools in our cluster, Matangi, Newstead and Tamahere. The children played hard but fair and were excellent ambassadors for our school. Thank you to the many parents who took transport and managed teams.

## The Ugly Bug Ball

Room 1 held another great camp fundraiser with the Ugly Bug Ball. We had red bugs, black bugs, yellow bugs orange bugs, purple bugs, and many creepy crawly bugs and insects!



## Vandalism

On a very sad note we report that in the holidays we had some vandalism at the school. The much loved maypole had one of its swings cut and another attempted to be cut (and have since come back and attempted to cut it again!) and the PE Shed had attempted to be broken into by beating the roller door and breaking a skylight.

We are very proud of our school and its surroundings so this was very upsetting to both teachers and children.

If you do ever see anything untoward happening around the school please do not approach the offenders, just call the Police.

## New Staff

With our ever increasing roll the Board of Trustees have employed Mrs Belinda Elias to work alongside Mrs Gilroy in Room 4. We welcome Mrs Elias to the staff who is here each morning.





We have had a very busy time this past term, a few of the highlights were:

A time to celebrate a number of activities and events: The roll as at the 1 July is 133, Three interesting and informative Huis (sharing assemblies), were held and enjoyed by parents and children.

Room 4 and 5's three day visit to Waihi, on their school camp, became a great learning experience for all

A busy professional development programme for teachers, focusing on the National Standards.

The School Council Ball which raised(\$10,000), and gave everyone a chance to be glamorous and enjoy the music, food and company.

The Faculty of Education student programme continues to evolve, with many student teachers gaining valuable experience at our school.

Over 70 children are playing Saturday morning soccer, The Matariki celebrations, which involved the whole school sharing in an art and music focus. The All Reds participation in the after school rugby competition.

#### **CONVERSATIONS WITH PARENTS, FAMILIES, WHANAU AND STUDENTS**

Evidence shows that best learning occurs when there is a positive focus on a student's strengths, wellbeing and self esteem. It is important to also communicate this to parents and families particularly when a student's learning is not progressing as expected. Parents will want to know what steps the school will be taking to ensure opportunities to accelerate progress and also what they can do at home.

The key messages are:

- Reading, writing and mathematics skills help you learn in all your other subjects.
- The standards have been designed to support all of your learning.
- It is easier to learn when you read texts, engage in tasks and work on solving problems that interest you.
- The texts, tasks and problem-solving become more complex over time – talk about what will change as learning progresses.
- Each example shows only a small part of the skills and knowledge needed to meet each standard.

A parents evening on Students Achievement, National Standards and Reporting is being organised for Wednesday 1 September at 7pm. For more information about National Standards visit <http://www.nzcurriculum.tkl.org.nz/National-Standards>

## MAORI LANGUAGE WEEK 26<sup>TH</sup> JULY – 1<sup>ST</sup> AUGUST

**Maori Language Week** is a week where New Zealanders are encouraged to recognise and practice the **Maori language** – Te Reo. Maori language is an official language in New Zealand. Maori Language Week gives us a chance to celebrate something truly unique to our country. Even New Zealanders, who have never learnt Te Reo, understand and often use words like *kia ora*, *haka*, *puku*, and *whanau*.

### IDEAS FOR CELEBRATING MAORI LANGUAGE WEEK WITH YOUR FAMILY

#### USE 5 MAORI WORDS A DAY

Create a family challenge where by every member has to use 5 Maori words in conversation each day. Chances are you already know more than 5 words and use them without even thinking. Some common Maori words

Kia ora – Hello, Kapai – Good, Whare – House, Kai – Food,

Whanau – Family      Puku – Tummy      Korero – Talk, speak

Moe Sleep      Waiata – Song, to sing

#### LEARN NEW WORDS

Make an effort to learn a dozen Maori words before the end of the week. You may choose to label rooms and furniture in your house, or find out the Maori words for your favourite food.

<http://www.maoridictionary.co.nz>.

#### CORRECT YOUR PRONUNCIATION

New Zealand is full of Maori place names, but many of us just roll them out without even attempting the correct pronunciation. <http://www.korero.maori.nz/resources/map.html>

#### WATCH TELEVISION

Watch a Maori Children's Programme with your kids, and encourage them to copy the words and phrases. You will be surprised just how much of the programme you already understand, and it may inspire you to become more familiar with the language.

#### WHAT WILL BE HAPPENING AT SCHOOL?

Each class will run their own programme with a focus on using Maori for Roll call, identifying fruit and vege using Maori vocab, singing waiata and practising the correct pronunciation of common place names.

Mitchell Keightley (R6)

Jackson Keightley (R2)

# THANK YOU

To Marilyn Langdon (our Teacher Aide) for making 30 Korowai (cloaks) for our school. We look forward to using them. Also thank you to Kay Ankersmit for her help with these. *You're both STARS!!*

#### AGRICULTURAL DAY – Saturday 16 October

It is that time of year again to start planning for our annual Ag Day in October. With Heather Old this year stepping aside from her many years of organizing Ag Day, it is time to put together a new group of people to run this fantastic day for the children. A meeting is to be held on Monday 26 July 7.30pm in the staffroom. Anyone interested in helping to organize this event is most welcome.





## Pukeko Preschool, Tauwhare

"Quality early childhood education for 2-5 year olds in a caring rural environment"

Our Pukeko Preschoolers are enjoying some new role play toys, meaning the services industry is getting a good work out. We have many budding firemen, ambulance officers, doctors, police and construction workers in our midst at present.

Our visit to the Hamilton City Gymnastics at the end of last term was a fabulous experience for all, and we'll be repeating this trip again in September. In the meantime we are looking forward to our annual outing to the Savage's goat farm next week, to mix and mingle with the many baby kids.

Our Tauwhare Winter Fair tickets are now on sale. Pre-purchase a ticket from any preschool family, or at the preschool, and you'll receive a entry into the LARGE multi-draw door raffle. Raffle tickets on the night are \$2. The fair starts at 5pm this year and will include a sausage sizzle and drinks for dinner, and/or come for a supper of good coffee and cake. There will be more quality stall holders than last year, and face painting entertainment for the children. Our spot prizes to be given away on the night is becoming quite a pile - thanks to the generosity of many businesses around! Whether you come for 1 hour or 4 - it will be worth a visit!

Pukeko Preschool continues to thrive with a full role but we are always open to new families on our waiting list. We welcome visits anytime during a session (8:45am - 1:15pm), or phone 824 0860.

Finally a reminder our AGM this year is 10th August, 7pm at Preschool, Tauwhare School Grounds.

Susan Thomas (Centre Manager)

## TAUWHARE WINTER FAIR

A fundraiser for  
**Pukeko Preschool**  
Friday 6<sup>th</sup> August 5 - 9pm  
Tauwhare Hall, 1158 Tauwhare Road

*An evening of shopping, socialising and fun!  
At least 28 stalls (food, gifts, crafts etc)  
Sausage Sizzle, Raffles and spots prizes*



All proceeds go towards the upgrading and expansion of our preschool

*Adults: Pre-purchased tickets \$5 with free door raffle entry  
(contact 824 0860)*

*Or \$5 entry only at door. Kids \$2 entry at door with FREE balloon and face painting.*

*Sorry No EFTPOS Facilities - Cash or cheque only*

[www.pukekopreschool.or.nz](http://www.pukekopreschool.or.nz)



# EUREKA BADMINTON CLUB



**JUNIOR CLUB NEWS**

18 July 2010

In June we had our monthly Yankee tournament, as usual everyone played their competitive best and the winners were Katina Vink and Brandon Vink. Well done and well played both of you. We had a break over the holidays so this month has been very quiet. We are looking forward to getting back for another term of badminton. The children are all very well behaved and because of this we are all thoroughly enjoying our badminton season. Thank you to the parents who help out with tidy up it is much appreciated. See you on Wednesdays from 6-7.30pm at Matangi Hall. Any enquiries contact Trisha Bengt 829 5531

## Badminton News

Tauwhare sisters, and Eureka Badminton Club ex-Juniors, Amanda and Haley Brown continue their success in badminton!

Amanda (18) recently followed up her success in winning the Counties Manukau Open Singles Title with a Runner Up in the Singles at the recently held New Zealand U/23's Championships in Christchurch. She was also a semi finalist in the Doubles with partner Susannah Leydon Davis (Waikato) and Mixed Doubles with Brock Matheson (North Harbour). Amanda was also No. 1 Girl for of the Northern Districts Team competing in the Teams Event that gained the silver medal at the New Zealand U23's Teams Event.

Amanda will be playing for the Waikato Wisden Cup Team (NPC of Badminton) in Hamilton this coming 6,7,8<sup>th</sup> August, at the Waikato Badminton Stadium. Waikato will be giving it their best shot to win the cup having just been defeated last year.



Haley (16) was part of the Waikato 19's Team that gained a Silver Medal at the North Island 19's Teams Event Championships in Auckland recently. She is also part of the Waikato Senior Division 3 Team that will be playing to win their division in Wanganui next month.

Haley has recently played her first International Tournament – NZ Junior International, winning her first round singles game gaining valuable experience.



## **TAUWHARE INDOOR BOWLING CLUB**

The past month has been busy, with the completion of the Open Singles and Mens' and Ladies' Singles and the bi-annual visit from Maungamahe (Taranaki) for some social bowls etc.

It was very pleasing to see a good number of entries in all the Singles Championships and it was great to see most of our newer members taking part.

Congratulations to Bronwyn McNally who, for the second consecutive year, was in the team that won the Gardener Cup. The Gardener Cup is played for annually by the ladies on a 'single entry' basis. This means that the teams are drawn according to the player's grading. Thus a more level playing field is created.

After uplifting the Devon Art Cup from St Andrews last month the Matangi-Tauwhare team successfully defended the first challenge by B.H.P. (Cambridge).

The next challenge is from Beerescourt.

### **Results:**

#### ***24<sup>th</sup> June 2010 - Open Singles***

- Winner L Grieveson
- Runner Up I Billings
- **Ferris Trophy** (longest surviving lady)  
R Bargh

#### ***1<sup>st</sup> July 2010 - Club Night (3 bowls triples)***

- Winners I Spencer, K Williams, R Hughes
- Runners Up J Arnold, L Verner, N Stolwyk

#### ***8<sup>th</sup> July 2010***

##### ***- Mens Singles***

- Winner J Bargh
- Runner Up I Spencer

##### ***- Ladies Singles***

- Winner R Arnold
- Runner Up R Bargh

#### ***15<sup>th</sup> July 2010 - Club Night***

- Winners I Billings, B Grieveson
- Runners Up J Arnold, N Woodcock, R Hughes

### **Up & Coming Events:**

- 5<sup>th</sup> August Drawn Pairs
- 12<sup>th</sup> August Club Night
- 13<sup>th</sup> August **(FRIDAY)** Couples Night
- 19<sup>th</sup> August President's and Vice-President's Pairs
- 26<sup>th</sup> August Club Night
- 30<sup>th</sup> August **(MONDAY)** Visit to Tamahere

**Good bowling everyone**

**Robin Bargh**  
Phone 824 1819





## What are the rules for wearing cycle helmets?

It's compulsory for all cyclists on New Zealand roads to wear cycle helmets. Your cycle helmet must:

- meet an approved standard
- be securely fastened.

Check that your helmet is the right size – it should fit snugly on your head with a minimum use of pads. It's not a good idea to buy a child a helmet that they will 'grow into'.

If your cycle helmet gets damaged, replace it with a new one.

Please note that if a police officer stops you and asks to inspect your helmet, you must give it to them.

If you don't wear an approved helmet, then you can be issued with an Infringement Notice (fine) of \$55.00.



Operation SNAP (Serial Number Action Project) is designed to reduce property offending and increase public confidence in Police by consistently applying a range of (educational, environmental and enforcement) partnership processes to CRAVED (Concealable, Removable, Available, Valuable, Enjoyable and Disposable) commodities under a single well known brand (SNAP).

The initial concept proposed is to create a database of serial numbers and unique identifiers of legitimately purchased (non-stolen) commodities for three key purposes:

- to enable easy retrieval of serial numbers by the owner if victim of property crime to assist Police in the identification of property and enable return to legitimate owners;
- enhanced identification of property noted in the Police National Intelligence Application (NIA); and
- to recover stolen commodities and identify offenders.

There are further benefits, such as providing second hand dealers with an ability to check automatically if property is lost or stolen. This feature is proposed in the form of a separate database (or subset of the total record) which would be populated with serial numbers of known stolen property from NIA, withholding any associated personal details for privacy and simplicity.

Waikato will be the lead District for Phase One. As a range of community contributors will be involved the opportunities for activity are broad, anything from Warning stickers and pamphlets to forensic DNA property marking. At it's most basic, the initiative is another tool to beat burglary and stop the trade in stolen property. I urge you all to become involved and learn more about SNAP in the coming weeks.



## NEWS FROM YOUR WAIKATO DISTRICT COUNCILLOR

Another month in to winter and so far I don't think the weather has been too bad or as cold as last year and the farms seem to be getting through reasonably well. In fact as I write this article the sky is blue and the heating is off!

Graham Mayall has offered to put a proposal to the Tauwhare Hall Committee and the adjoining land owner to try to rearrange the paper road beside the hall in to a better shape so it can be utilised as a small, but useful, *recreation reserve* and extra parking for the hall. Council will be very supportive of a recreation reserve if all parties can agree.

Graham is also working on your behalf to put a *sign post* on the lane off Tauwhare Road within the village. Normally similar access lanes are named to identify where people live to assist with directions for emergency services and for visitors and locals to find their friends and families.

### **Rates 2010**

- The **General Rate** has been set at \$184.62 per \$100,000 of capital value and the Uniform Annual Charge (UAGC) at \$463.00 per rating unit which represents a 2.96% rate increase to existing ratepayers.
- The **Hall Rate** for both Eureka and Tauwhare will be \$25.00 per year.
- **Rubbish collection, recycling**, and one inorganic collection per year will be \$169.00.

If you wish to join the *Southern Districts Water Scheme* it is a good time to do so because we have **bought down the cost** for installing the manifold (which includes the box the meter goes in) from \$1800 to \$1080. The capital contribution, which gives you 1.8m<sup>3</sup> per day trickle feed, is \$1584.51 - A total of \$2664.51. The UAGC for those on the water scheme will be \$301 plus the water charge of each \$1.60/m<sup>3</sup> used. Tauwhare Pa is designated as urban (town) and has a pressure system rather than a trickle system so we are able to reduce their cost to \$144.00 per household plus the \$1.60/m<sup>3</sup>.

The Southern Districts obtains its water from Hamilton City and we purchase 5000 m<sup>3</sup> per day. We are seeking to at least double that. Negotiations around this have been a long drawn out exercise but I think we finally may have an agreement with the City.

**Waikato / Franklin Amalgamation** - We have made a final decision on the location of the new WDC office in Tuakau. It is a brand new building with one big space compared with our first choice that was four shops which we would not have been able to lay out as well because of the dividing walls. So with the one clear space we can design the office to meet our exact requirements.

**Hamilton Airport runway extension - Plan Change Variation 14** is being worked on by Waipa District Council to ensure that the runway has the potential to be extended to the full length envisaged by the Airport Directors which will eventually allow it to take the big jets presently restricted to landing at the major airports. I fully support this Variation. We must have this potential in place because if we don't make provisions now the land will either be built over or will be very expensive to buy in the future. Development and sales at Titanium Park, the industrial park at the airport on surplus land not required by the airport, is slowly progressing but due to the recession, like every other development, work has slowed considerably.

### **Rob McGuire**

**Councillor Eureka Ward**

Ph. 824 3696/fax 824 3645

Mobile 0274 970 966/email [robmcguire@xtra.co.nz](mailto:robmcguire@xtra.co.nz)

## IN YOUR GARDEN

It may be cold, dark and miserable, but console yourself, we are now past the shortest day, so roll on Spring, but remember there are always jobs to be done.

This is a great time to be planting fruit trees, also existing deciduous fruit trees need to be pruned now.

Epsom salts (magnesium sulphate) dissolve 2 tbsps in 9ltrs of water then pour onto the pre-soaked area under the tree out to the drip line of Lemon & Daphne bushes.

Plant Strawberries now, but be wary, while strawberry plants are frost hardy the flowers can be damaged by frosts. Strawberries will grow in most sunny situations but they don't like wet feet so drainage is essential. They are also susceptible to the same diseases as tomatoes and potatoes, so avoid planting where tomatoes or potatoes have been planted in the past 4yrs. If planting in pots use good quality potting mix with slow-release fertiliser. Water regularly.



Ideal shrubs for our area that can be planted now are:

Flannel Bush, a South African shrub with fluffy flowerheads in winter, a vase life of 7-10 days.

Protea Laurifolia, produces velvety blooms year round with a vase life of 2-3 weeks.

Grampians heath Myrtle is an Australian native with pink buds that open to starry white flowers, it blooms from autumn to spring and lasts many weeks in a vase.

Off the top of my head, flowers to plant now; Primulas, Calendulas, the perennial Lobelia, Sweet Peas, Sweet William and Roses.

To do list:

1. Plant Garlic and Onions
2. Take Rosemary cuttings.
3. Plant Rosemary for the bees, remembrance or cooking.
4. It's time to dig in your glasshouse, use a fork & dig as deep as you can to oxygenate the soil.
5. Pile lawn clippings, & fallen leaves into your compost to provide warmth for decomposition.
6. Keep walking around your garden with a hoe, thus preventing wet clumps of soil and provides plants with better insulation from winter cold.
7. If you don't like lichen, spray your deciduous trees with Lime Sulphur.
8. Put the spade through dormant clumps of Hostas to increase your plantings but remember to sprinkle some snail bait around.
9. Plant seeds in trays in your glasshouse.
10. Quote: The Bare Earth is Full of Promise



Happy Gardening, Jennifer



### 2010 National Country Music Awards

Saturday 14 August 7.30 Founders Theatre

Top Twins, James Ray, Tami Neilson, Cameron Clayton, Kaylee Bell, Daniel Cosgrove, Saelyn Guyton, Tonielle Neda, and Tim Pekamu.



Bookings Ticketek, [www.kiwiproamcountrymusic.co.nz](http://www.kiwiproamcountrymusic.co.nz).



### Ladies Bring a Plate

Meatloaf is an ultimate comfort food.

Enjoyed hot or cold.

### BBQ Meatloaf



- |                            |                              |
|----------------------------|------------------------------|
| 500g sausage meat          | 2 onions chopped             |
| 500g mince                 | 2 teas curry powder          |
| 1 cup fresh breadcrumbs    | 1 tablespoon parsley chopped |
| ½ cup milk and ½ cup water | 1 egg                        |
| Salt and pepper            |                              |

Combine sausage, mince, breadcrumbs, onions, salt and pepper, curry powder, parsley and egg in a bowl. Beat until well combined. Gradually add combined milk and water. Continue beating till very smooth Shape into loaf and put in a greased baking dish.

Preheat oven to 180 or 160 fan-forced for 30 minutes.

Remove from oven pour over sauce and return to oven for another 45 minutes baste frequently

### Sauce

Combine all ingredients in saucepan. Bring to boil and simmer 5 minutes

- |                       |                      |
|-----------------------|----------------------|
| ½ cup water           | 1/2cup tomato sauce  |
| ¼ cup Worcester sauce | 2 Tablespoon Vinegar |
| ¼ cup brown sugar     | 1 teaspoon coffee    |
| 30g Butter            | 2 tables lemon juice |

### COMING EVENTS



#### Are you interested?

**Halloween** - I am looking for a small group of people to help organize a Halloween party in the Eureka Hall on 31<sup>st</sup> October. This could be a fun couple of hours for the kids and let them have a bit of Halloween magic. If you are interested please phone me Gayle Orr 824 1713.

**Garage Sale** – the Express Committee will consider organizing another Garage Sale in the Eureka Hall in September if there is enough interest. Expressions of interest to [editor@eurekaexpress.co.nz](mailto:editor@eurekaexpress.co.nz) or phone Gayle Orr on 824 1713.



2010 - 2011

# EUREKA GIANT PUMPKIN EXPRESS

\$10.00 for growing instructions and Plant.

## 10 Prize Categories

1<sup>st</sup> Heaviest  
2<sup>nd</sup> Heaviest  
3<sup>rd</sup> Heaviest  
Average Weight  
Best Pair  
Best Colour/s  
Most Unusual  
Youngest Gardner  
Oldest Gardner  
Pumpkin closest to Judges Weight????



Seedling distribution date: 23<sup>rd</sup> October 2010  
Weigh in date: 28<sup>th</sup> March 2011  
Venue: Eureka Hall  
Time: 11.00 am to 1.00pm

\$10.00 for growing instructions and Plant.

## WEIGH IN DAY SAUSAGE SIZZLE



All proceeds to the EUREKA EXPRESS



## Consulting Officer Comment for Eureka Express

July 2010

### Fertiliser price drop

The 'payout' is up and fertiliser prices are coming down. Sulphates of Ammonia and Potash have dropped \$100/t and \$200/t respectively in the last few weeks. This means that Ammo has dropped in the order of \$60/t.

So what form of Nitrogen should one use in August? Unless you are very short on Sulphur don't use straight Sulphate of Ammonia as it is a lot more expensive per unit of N than either Urea or Ammo and applies more readily available Sulphur than is likely required. S deficiencies tend to show up at the end of winter after extended periods of leaching. If you are on peat, or soils known to be low in Sulphate S, then I would be applying Ammo, over the next couple of months, rather than Urea. For everyone else the decision should be made in conjunction with your soil tests, considering when you last applied fertiliser with Sulphur in it and in discussion with your fertiliser Rep.

### Spring Rotation Planning

Have you ever tried to describe to a new employee how you allocate areas to mobs at this time of year and why things are done the way they are? I'd challenge you to try and do it simply and clearly. It's not that easy!! Here's my latest attempt at a simple approach.

1. Calculate total area to graze using spring rotation planner
  - a. Modify according to whether cover is > or < target
2. Allocate areas to pre and post calve animals
  - a. Rule of thumb 30m<sup>2</sup>/cow/day dries and 60+m<sup>2</sup>/cow/day post calve
3. Use pre and post graze mass to calculate intake  
e.g. 3,400 - 1,200 = 2,200/ha eaten. At 30m<sup>2</sup>/dry cow = 6.6kg DM/cow/day
4. Make decision: production hit or supplement  
In a season of predicted high milk price it is economic to make up any shortfall with supplement.

When you do the sums for step 3 the average farmer stocked at 3 cows/ha needs pre grazing covers of around 3,500kg DM/ha to meet a dry cows requirements from pasture alone. 30 sqm would provide 7 kg DM/cow/day.

The problem arises when pre grazing covers are only say 2,800 kg DM/ha. At 30 sq m intakes from pasture will drop to 4.8 kg DM/cow/day. Supplementation is required because, if greater area per cow is provided, the round becomes too fast and the cows will go short of pasture in a month's time when you want the milkers to be really 'cranking' along.

A similar calculation can be done with the milkers who are given 60 sqm in early lactation. They need to have a pre grazing cover of 3,400 and graze down to 1,400 to get 12 kg DM/cow/day on pasture alone. Very few are getting by with pasture alone and are making up the shortfall with 2 - 4 Kg DM from supplements.

The Eureka Discussion Group is having a lunchtime meeting at the Top Pub, Morrinsville on Tuesday August 10<sup>th</sup>. Nothing too serious, just a chance to 'chew that fat' over lunch and get away from calving routines for a couple of hours. Bring some cash.

Phil Irvine - Consulting Officer, Hamilton North

DairyNZ



## FARM DISCUSSION GROUP REPORT – JULY 2010

Our last group was held at Bernard Veryt's lease farm on Holland road on July 13<sup>th</sup>. It was a nice day to be off the farm and there was a good turnout by a bunch of farmers that seemed happy to be doing the job they did. There were a few topics up for discussion. Spring rotation planner, Grass cover, cow condition and some simple idea's to explain the way we farm through the spring.

First of all we had a bit of a round up for people to compare covers and cow condition amongst the group. A lot of people suggested their covers to be around 2200 and cow condition close to 5 but I did wonder how many of these people had done a farm walk in the last year or 2.

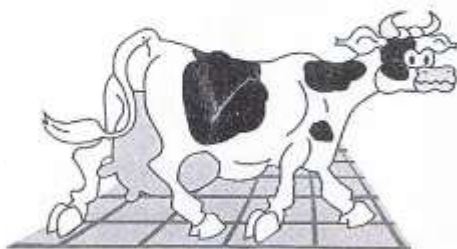
We split into groups to come up with an easy way to explain our way to get through the spring. The simplest that I remember was to give dry cow 30 square meters and milkers 60 square meters and feed supplement to fill the gap if pasture cover was not at the desired level. This kept you in check with the spring rotation planner although needed to be checked up on to make sure round length did not get to fast. The pre grazing cove needed to be 3500 for the dry cows or 3200 for the milkers to use this formula without supplement.

We went for a good walk around the property and found the cows to be in excellent condition, going into a pre grazing cove of 2500 plus 4kg of maize. They had just started calving with 9 cows in. As we walked through the paddocks we got to our favourite topics of re-grassing black beetle and the drought. A lot of the farm had been under sown with good results in most paddocks. There was a lot of weed in the pastures and these paddocks were planned to put into maize this summer to address the worst paddocks. To finish the group we had a discussion on whether to plant turnips for the summer or buy P K in when needed. There were mixed opinions but seeing as I am writing this I will give you mine. Turnips grow good on a good year and bad on a bad one, Chicory is a lower risk crop to plant and provides a good yield of high protein, high Me feed when it is needed. On a summer dry farm where regressing paddocks is needed this is a good option. Other wise hope for the best it must be out turn for a good Summer/Autumn and buy P K when needed.

Our next group is to be held at the Top Pub in Morrinsville on August 10<sup>th</sup> around 12 O'clock. This is a good chance for us all to see how deep everyone else's s\*\*t is and that we are not the only ones in it. Also there happens to be a cold beer and a good feed. Hope to see you there.

Cheers all happy calving

*Brett Gordon*



**Local builder  
Tauwhare Road resident  
Registered Tradesman**



Concrete work  
New homes  
Renovations  
Alterations  
Farm buildings  
Decks  
Fences  
Bathrooms  
Kitchens  
Roofing

Over 29 years building experience  
No job too big or too small

**Craig Griffin Builders Limited**

Phone Mobile: 027 279 2882  
Phone/Fax After Hours: 824 1607  
Email: craigandjackiegriffin@ihug.co.nz

# YOGHURT



**FACT** – Yoghurt has been subjected to intense scientific scrutiny in the 20<sup>th</sup> century and found to be a versatile therapeutic agent, much of its benefit comes from the prodigious activity it stirs up in the digestive tract. Yoghurt's distinguishing characteristic is its family of natural bacteria, called LACTOBACILLI that cause fermentation and a sharp taste. Yoghurt's therapeutic capabilities depends on the type of bacteria present.

## **POSSIBLE THERAPEUTIC BENEFITS –**

- Kills bacteria
- Prevents and treats intestinal infections including diarrhea
- Lowers blood cholesterol
- Boosts immune system
- Improves bowel functioning
- Contains compounds that prevents ulcers
- Has anti-cancer activity

## **HOW MUCH -**

3 cups of yoghurt a day have lowered blood cholesterol. A third to a half cup of skim milk yoghurt daily has cured infants with severe diarrhea.

## **NATURAL ANTIBIOTICS -**

Research finds that yoghurt's active bacteria and by products released in the intestinal tract are natural broad spectrum antibiotics. Scientists have isolated seven natural antibiotics from yoghurt and other fermented milks, some with bacteria killing powers equal to or more effective than pharmaceutical antibiotics like Terramycin.

**NOTE:** Not all yoghurts have the same therapeutic potential. The type and amount of bacteria in the yoghurt determines its precise health effects on the body. The L. ACIDOPHILUS culture is regarded as the most beneficial and versatile.

CHERYL MCFARLANE.



## Eureka Precast Concrete

117 Hooper Road

**Manufacturer of the following  
Farm and Small Block Concrete Products**

Palm Kernel Feeding Troughs

Feeding Pad Troughs

1,000 Litre Oblong Water Troughs

200 Litre Round Water Troughs

Offal Hole Lids

Septic Tank Replacement Lids

Plus Much More

Ph. Ian Manning – 0274 961902

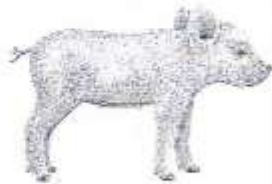
824 1988 a.h.

## JBVisserVets

The team of **JBVisserVets** pride themselves on providing you top quality care for all large animals. Be it dairy, beef or lifestyle, your animals are in the best of care. Customer focused to the highest of quality, **JBVisserVets** look forward to meeting you today.

**0800 VISSER**

**47 Lorne St Morrinsville / 161 Morrinsville Road Newstead**



**JBVISSE  
VETS**  
07 889 0414

**INNOVATIVE**



870 SH 26 Newstead  
 Brent 0272 432 011  
 mcfarlanes@farmside.co.nz

Ph 824 1186  
 Brent 0272 432 011

- Hay / Haylage—round, square, conventional
- Grass & Maize Silage
- Full ground cultivation
- Maize and Crop Planting
- Land lease & Share Cropping
- Spraying
- Truck & Trailer Hire
- Digger
- Metal injected sub-soil irrigation



"Helping farmers feed their cows"



## Ctas NZ Ltd

www.ctas.co.nz



**Specialists in:**

- Professional systems online and PC development
- Online Internet based and PC/Lan Systems development
- Business Websites – FREE development (conditions apply)  
Check out <http://ctas.co.nz/Webs/Home.aspx> to see more.
- Alert-Me - Online TXT and Email reminder system, ideal for everything, from birthdays, appointments, sporting, gardening, TAX, WOF, Registration and many more. One off or recurring. Free for home use. Go to [www.Alert-Me.co.nz](http://www.Alert-Me.co.nz)
- YouTXT – Operate your own TXT shortcode using our TXT system for free. Go to [www.youtxt.co.nz](http://www.youtxt.co.nz)
- FlightCheck – Check your Flight details, real time from your Mobile Phone. TXT Flight number to 8808. Txt's cost 50c

Phone: 07 824 1025  
 Email: [grant@ctas.co.nz](mailto:grant@ctas.co.nz)






**CCO CompTIA**  
Network Certified



**Newstead Veterinary Services**  
 161 Morrinsville Rd (SH26)  
 Phone (07) 856-4522 Fax (07) 8569487  
 email: [admin@newsteadvets.co.nz](mailto:admin@newsteadvets.co.nz)  
[www.newsteadvets.co.nz](http://www.newsteadvets.co.nz)

- We offer a comprehensive range of services for dogs, cats and small pets.
- Puppy pre-school classes
  - Comprehensive range of pet care products and pet food
  - Nutritional advice with onsite pet dietician and free weight clinic
  - Cremation with a local pet crematorium, with optional return of ashes
  - Isolation ward
  - NZVA Microchipping Accredited Practice
  - MAF Accredited vets for pet export certificates to Australia
  - Ample parking

**We believe that pets are important members of your family.**



## Gayle Orr

Spiritual Counsellor & Teacher

Working with angels to relay  
Messages from loved ones

Personal Readings

Healing

Spiritual Counselling

Meditation & Relaxation

Classes

For a personal reading  
phone: 07 824 1713

## ACE OF SPADES

### Landscaping



Your outdoor living specialist

All aspects of landscaping

And garden services

### FREE QUOTES

Call Cameron Barr

m. 021 303 053

Ah. 824 1059

## CALF COVERS

"Canvas, Jute, or satin  
lined for Calf Club"

I also manufacture horse  
covers, trailer covers or any  
other kind of cover you may  
want. Good quality, P.V.C.  
horse gear bags — can also  
be used for dive bags.  
Good quality at reasonable  
prices.

Phone Narelle Pollock  
824 0736



## CAMBRIDGE CARPET CLEANING

Serving the Waikato

### Also

- ✓ Upholstery Cleaning and Protection
- ✓ Flood Restoration
- ✓ Stain Treatment
- ✓ Auto and Marine Work
- ✓ Window Cleaning
- ✓ Senior Citizens Rates

Phone Grant on 0275 542 116

Or 07 823 7031

Locally Owned and Operated

## THE BEAUTY HOUSE

Personalised, friendly service

(Previously T/A Beauty To Go)

Tauwhare Village

1092b Tauwhare Road

Ph: 8240950 or 0274 853985

scanlan.jones@xtra.co.nz

Gift vouchers also available for  
beauty treatments or retail products.

- ✕✕ Bella Vi Cosmetics
- ✕✕ Oasis Beauty Skincare/Baby Products
- ✕✕ Skin Deep Body Products



Jacqueline Jones  
Beautician  
(CIBTAC, RCompN)

## nzgardensheds

THE BEST GARDEN SHEDS AVAILABLE

Your local garden shed supplier of  
NZ made, self assemble Garden Sheds  
(Zincalume or Colour Steel)

### GET IN TOUCH...

- \* EASY ASSEMBLY
- \* MADE TO LAST!

### Waikato Shed Company

218 Hunter Road, Eureka,  
Hamilton

Phone: 07 824 1045

Email: sales@nzgardensheds.co.nz

### ENQUIRE FOR A BROCHURE NOW

## Trusler Contract

### Lawn Mowing

Fast, efficient, reliable



Free, no-obligation quote and  
advice

Lex Trusler

Ph: 824 1906 Mob: 027 221 0861

Fax: 824 1907

Lifestyle blocks—sections

Road verges—horse studs

20 yrs + experience

## Scanlan & Jones

Specialists in:

- ✓ Wood Fire Sales
- ✓ Wood Fire Installation/Repairs
- ✓ Hearth Manufacturers
- ✓ Outdoor Fire Installations
- ✓ Chimney Sweeping
- ✓ Heat Transfer Kits — Sales & Installation

Registered Installers  
Over 17 Years Experience  
Free Quotes



Contact Justin & Brendon  
0274 834 267 (day)

A/Hrs: 07 824 0950 Fax 07 824 0951

Email: scanlan.jones@xtra.co.nz

Member of New Zealand  
Heating Association



## HAIRFIELDS

### HAIR DESIGN

95 HOOPER ROAD

Sharon Laurent

Full salon facility in Eureka

Total hair care professional

with many years experience

Agent for Nutrimetics also



Open Tuesday to Friday

Late nights Tues/Thurs

Tel. 824 1712 or 027 280 5978

**SPYVES PANEL SHOP**  
for all  
Panel and paint requirements



**AUTOROBOT CHASSIS  
and  
ALIGNMENT MACHINE**

Ph Ron or Karen 8241 890  
Fax 8241 892  
Mob 027 280 0346

## ROSS PUMPS

&  
Filtration Specialists Ltd



Servicing and installation  
On all types of pumps  
Full Water Treatment  
Service Available

**DAREN ROSS**

Tel. 8241 726 or 0274 346 571  
Fax. 8241 879  
Email: rosspumps@xtra.co.nz

## COMPUTERISED BULK SPREADERS LTD

For all your spreading needs



**FERTILIZER, LIME, UREA**

Top Service,  
Competitive Rates

Roger Springett  
103 Hooper Road Eureka  
Ph. 8241 175  
Mob. 0274 970 413

## EUREKA POULTRY FARM

13 Hooper Road  
Ph 824 1762

**NIC & MARIA STOLWYK**  
Hobby Hens



Young pullets from  
5 weeks to point-of-lay  
Great for lifestylers  
Bagged up chook manure  
Hours Mon-Sat 8-6

## Green Acres

Professional lawn and  
Garden care service



**Maurice Smith**

For free no-obligation quote:  
Ph: (07) 824 1948  
Mobile: 0274 797 282  
Fax: (07) 824 1947  
Email: msmith@clear.net.nz  
Ride-on mowing specialists  
Give your lawn the perfect finish

**IAN MANNING**  
REGISTERED DRAINLAYER



For all drainlaying work  
New or alterations  
Residential & Commercial  
Blocked drains cleared  
Maintenance  
Prompt service

Tel. 8241 988  
Fax. 8241 989  
Mob. 0274 961 902

## Kelvin Lalich Builders Ltd

- New homes
- Alterations
- Large & Small  
Commercial Buildings
- Chicken Sheds

Phone 889 3951 (bus)  
889 3975 (a/hrs)



**"Building  
with Pride"**

FRESH  
APPLES & PEARS  
STONEFRUIT IN SEASON



**NEWSTEAD ORCHARD**  
552 Morrinsville Road

OPEN MON-SAT,  
W J McMiken & Co  
Morrinsville Road  
Tel. 856 4478

## TAUWHARE HOME KILLS LTD



Tauwhare Village  
Owner Operators  
Trevor & Leonie Brunton

On Farm Killing Service  
All beef hung for 7 days  
**FREE OFFAL DISPOSAL**

Ph 824 0880 all hours  
Fax 824 0809  
Mob 0274 757 315



## EUREKA MOTORS

COLIN DUNCAN (PROP). SH 26, OPPOSITE EUREKA HALL

**WE ARE EQUIPPED AND SKILLED TO CARRY OUT  
ANY REPAIRS NEEDED ON ALL TYPES OF VEHICLES**

Our experienced workshop staff guarantee to provide quality service  
to all our customers  
If we don't have the right part in stock we'll get it for you straight away  
If you need some work done, why not give us a try?

**OPEN MONDAY - FRIDAY 7.30am - 6.00pm  
SATURDAY 8.00am - Noon  
Ph 8241 773 Fax 8241 073**

## WALLING CONTRACTING LTD 'YOUR PROVEN LOCAL ONE STOP CONTRACTORS'

WE CAN OFFER YOU THE FOLLOWING SERVICES:



- \*Grass Silage
- \*Ploughing
- \*Rotary Hoeling
- \*Ripping
- \*Undersowing
- \*Baling & Wrapping
- \*Digger (12 Ton)
- \*Grass Crop Sales

- \*Maize Silage
- \*Power Harrowing
- \*Discing
- \*Maize Planting
- \*Roller Drilling
- \*Power Harrow/Seedbox
- \*Shavings & Sawdust
- \*Maize Crop Sales



**FOR ALL YOUR CONTRACTING NEEDS  
PHONE LEN OR BECKY  
ON  
824 0894 (anytime)**



# BUY NOW TO BEAT THE GST PRICE INCREASE

**It may never be cheaper to build a new steel shed.**

Waikato Shed Company offers a true custom design & build service that ensures you get the very best shed for your needs that is outstanding value for money. We listen to what you want because we understand that one size does not fit all. In fact in over 4 years we have never built the same shed twice.



## FULL DESIGN & BUILD OR KITSET ONLY OPTIONS

- American Barns
- Aircraft hangars
- Workshops & storage
- Stables & arenas
- Industrial buildings
- No set size restrictions
- All steel construction
- Clear span (no web trusses) up to 35m
- Up to 7m eave height
- Any length
- Integrated mezzanine floor
- Full range of cladding colours & choices



## FREE, NO OBLIGATION DESIGN & QUOTE SERVICE



Freephone **0800 555 147**  
218 Hunter Road, Eureka  
[www.waikatosheds.co.nz](http://www.waikatosheds.co.nz)

**WAIKATO SHED**  
COMPANY ✓  
*great sheds, done right!*  
Hamilton • Taupo

# BUILT TO LAST THE DISTANCE

*"Our multi-purpose shed was a challenging build and Waikato Sheds did a first class job of it. Their attention to detail and quality of workmanship was really good. Nothing was too much trouble."*

**Rob Waddell**, Olympic Gold Medalist,  
Americas Cup Sailor



When Rob Waddell needed a new building for his farm, he chose Waikato Shed Company. Rob had specific requirements that had to be met, and it was clear a "standard shed" wasn't going to give him the flexibility, features or look he was after.

With the new shed located close to his home, it was important that it be aesthetically pleasing. The monopitch roof was custom made to precisely match the roof pitch of Rob's house, and horizontal cladding was used to create a consistent appearance with the house.

Careful planning and innovative design ensured the building wasn't just another steel shed, but a valuable addition to the property.

FARM • INDUSTRIAL • LIFESTYLE

**WAIKATO SHED**  
COMPANY

great sheds, done right!

Hamilton • Taupo

[www.waikatosheds.co.nz](http://www.waikatosheds.co.nz)

